

Trailer Axle Spare Parts Listing

Distributors

For Your Trailer Axle Suspension Needs Call York :

Head Office

Singapore

York Transport Equipment (Asia) Pte. Ltd.
No. 5 Tuas Avenue 6, Singapore 639295
Email : enquiry@yorktpt.com.sg
Tel : (65) 6861 0577 Fax : (65) 6861 4045

<u>Content</u>	<u>Page</u>
Axle Spare Parts Listing	2 - 11
a. Axle beam spare (all axle models)	2 - 5
b. Hub and Drum spares	
i) Disc Wheel Axles with TM & TQ Bearing	6 - 7
2001, 2010, 2011, 2012, 2021, 2022	
5002, 5003, 5008, 5015, 5021, 5022	
5801, 5802	
8001, 8002, 8003, 8006, 8012, 8021	
9501, 9502, 9503, 9504, 9505, 9508	
ii) Disc Wheel Axles with TN & TP Bearing	8 - 9
2682/3, 2682/3A	
2782/2, 2782/3, 2782/4P	
2784/2, 2784/3, 2784/4P	
2950/7, 2950/8P, 2950/10	
2953/10, 2953/11	
2954/10, 2954/11	
iii) Spoke Wheel Hub Axles	10 - 11
2682/1, 2782/1, 2783/1, 2950/1, 2954/1	
6062, 6852, 6862	
8014, 8015, 8016, 8017	

Table 1A : Axle Beam Spares (All Axles with TM & TQ Bearing, with Standard Open Camshaft)

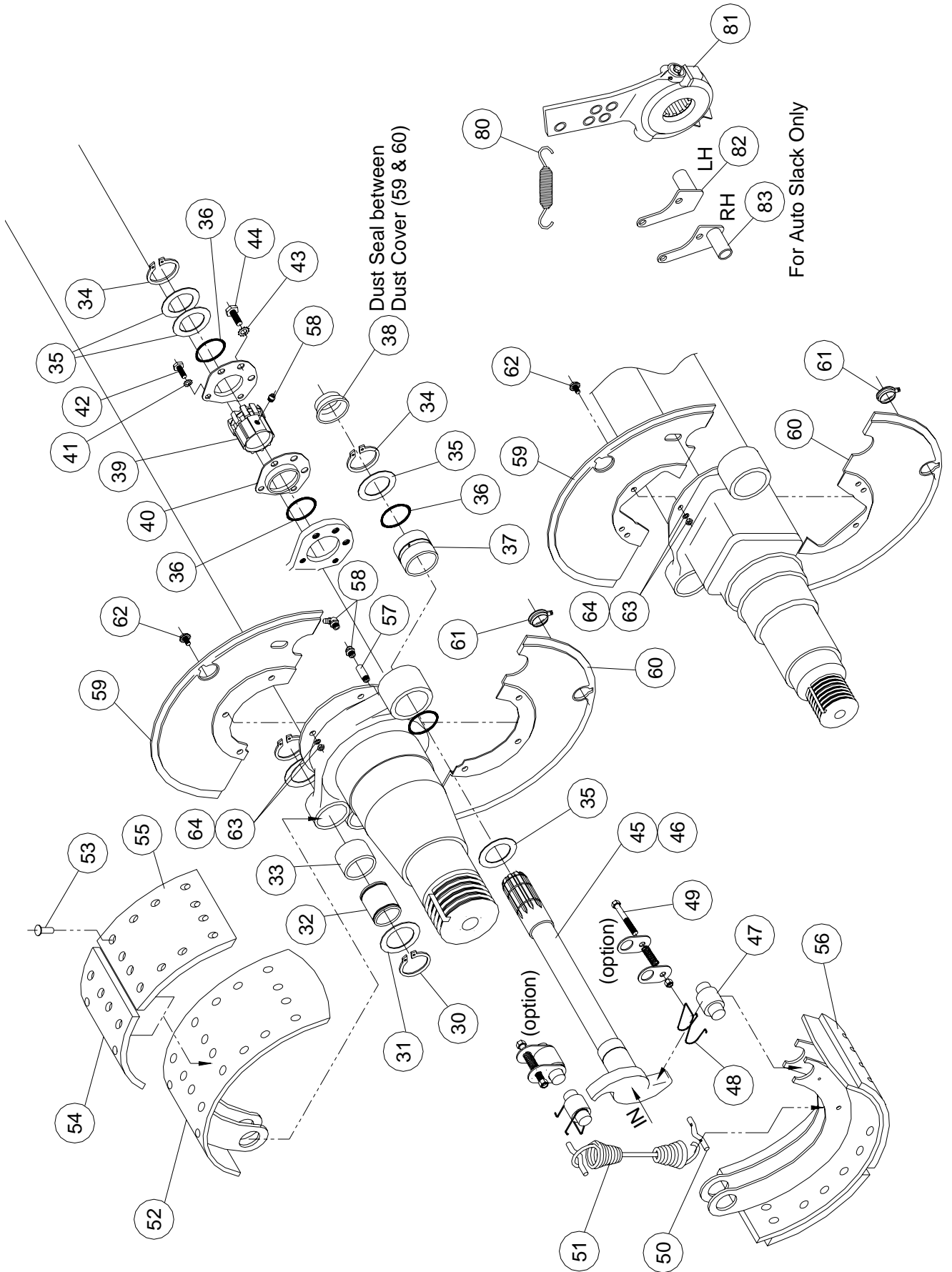


Table 1A : Axle Beam Spares (All Axles with TM & TQ Bearing, with Standard Open Camshaft)

Item	Description	Model No.	Model No.	Model No.	Model No.	Model No.	Model No.	Model No.	Model No.	Model No.	Model No.	Model No.
30	Circlip, Anchor Pin	9501	9503	2001	5003	2010	5002	8001	8001	5802	8003	8003
31	Washer, Anchor Pin	501996	501996	501996	501996	501996	501996	501996	501996	501996	501996	501996
32	Anchor Pin	501995	501995	501995	501995	501995	501995	501995	501995	501995	501995	501995
33	Bush, Anchor Pin	501787	501787	501787	501787	501787	501787	501787	501787	501787	501787	501787
34	Circlip, Camshaft	500374	500374	500374	500374	500374	500374	500374	500374	500374	500374	500374
35	Spacer Washer, Camshaft	500358	500358	500358	500358	500358	500358	500358	500358	500358	500358	500358
36	O Ring, Camshaft	500375	500375	500375	500375	500375	500375	500375	500375	500375	500375	500375
37	Bush, Camshaft	786123	786123	786123	786123	786123	786123	786123	786123	786123	786123	786123
38	Dust Seal, Camshaft	500686	500686	500686	500686	500686	500686	500686	500686	500686	500686	500686
39	Spherical Bearing, Camshaft	500362	500362	500362	500362	500362	500362	500362	500362	500362	500362	500362
40	Housing, Spherical Bearing	500363	500363	500363	500363	500363	500363	500363	500363	500363	500363	500363
41	Star Washer, Spherical Bearing	EW10	EW10	EW10	EW10	EW10	EW10	EW10	EW10	EW10	EW10	EW10
42	Bolt, Spherical Bearing	HB10/150/020	HB10/150/020	HB10/150/020	HB10/150/020	HB10/150/020	HB10/150/020	HB10/150/020	HB10/150/020	HB10/150/020	HB10/150/020	HB10/150/020
43	Star Washer, Spherical Bearing	EW12	EW12	EW12	EW12	EW12	EW12	EW12	EW12	EW12	EW12	EW12
44	Bolt, Spherical Bearing	HB12/175/020	HB12/175/020	HB12/175/020	HB12/175/020	HB12/175/020	HB12/175/020	HB12/175/020	HB12/175/020	HB12/175/020	HB12/175/020	HB12/175/020
45	Camshaft LH	504742/01L/HT	790238/01L/HT	504723/01L/HT	504723/01L/HT	504723/01L/HT	504723/01L/HT	504723/01L/HT	504723/01L/HT	504723/01L/HT	504723/01L/HT	504723/01L/HT
45(i)	Camshaft LH (Optional)	504742/19L/HT	790238/19L/HT	504723/02HT,18L/HT	504723/02HT,18L/HT	504723/02HT,18L/HT	504723/02HT,18L/HT	504723/02HT,18L/HT	504723/02HT,18L/HT	504723/02HT,18L/HT	504723/02HT,18L/HT	504723/02HT,18L/HT
46	Camshaft RH	504742/01R/HT	790238/01R/HT	504723/01R/HT	504723/01R/HT	504723/01R/HT	504723/01R/HT	504723/01R/HT	504723/01R/HT	504723/01R/HT	504723/01R/HT	504723/01R/HT
46(i)	Camshaft RH (Optional)	504742/19R/HT	790238/19R/HT	504723/02HT,18R/HT	504723/02HT,18R/HT	504723/02HT,18R/HT	504723/02HT,18R/HT	504723/02HT,18R/HT	504723/02HT,18R/HT	504723/02HT,18R/HT	504723/02HT,18R/HT	504723/02HT,18R/HT
47	Cam Roller	500356	500356	500356/01	500356/01	500356/01	500356/01	500356/01	500356/01	500356/01	500356/01	500356/01
48	Roller Retainer, Wire	-	-	500373	500373	500373	500373	500373	500373	500373	500373	500373
49	Roller Retainer, Bolted	787722/01	787722/01	-	-	-	-	-	-	-	787722/01	787722/01
50	Pin, Return Spring	500372	500372	500372	500372	500372	500372	500372	500372	500372	500372	500372
51	Return Spring	501551	506498	786289	786289	786289	786289	786289	786289	786289	786289	786289
52	Brake Shoe	502904/02 (P)	788845 (P)	502906/01 (P)	502906/01 (P)	502906/02 (P)	502906/02 (P)	502906/02 (P)	502906/02 (P)	502906/02 (P)	502906/02 (P)	502906/02 (P)
53	Lining Rivet	502245	502245	502245	502245	502245	502245	502245	502245	502245	502245	502245
54	Anchor Lining	788857/02/AF237	788846/02/AF237	786282/02/AF237	786282/02/AF237	786284/02/AF237	786284/02/AF237	786284/02/AF237	786284/02/AF237	786284/02/AF237	786284/02/AF237	786284/02/AF237
55	Cam Lining	788856/02/AF237	788846/02/AF237	786281/02/AF237	786281/02/AF237	786283/02/AF237	786283/02/AF237	786283/02/AF237	786283/02/AF237	786283/02/AF237	786283/02/AF237	786283/02/AF237
56	Lined Shoe Assy	SB788855/02/AF237	SB787650/02/AF237	SB502064/02/AF237	SB502064/02/AF237	SB502065/02/AF237	SB502065/02/AF237	SB502065/02/AF237	SB502065/02/AF237	SB502065/02/AF237	SB502065/02/AF237	SB502065/02/AF237
57	Grease Nipple Extension	-	-	507327/01	507327/01	507327	507327	507327	507327	507327	507327	507327
58	Grease Nipple	738016/05	738016/02	738016/05	738016/02	738016/05	738016/02	738016/02	738016/02	738016/02	738016/02	738016/02
59	Dust Cover, Upper (L/R)	501577	506414/01	786335	786335	786335	786335	786335	786335	786335	786335	786335
60	Dust Cover, Lower (L/R)	501576	506414/01	786336	786336	786336	786336	786336	786336	786336	786336	786336
61	Dust Cover Plug	500848	-	500848	500848	500848	500848	500848	500848	500848	500848	500848
62	Bolt, Dust Cover	FB08/125/016	FB08/125/016	FB08/125/016	FB08/125/016	FB08/125/016	FB08/125/016	FB08/125/016	FB08/125/016	FB08/125/016	FB08/125/016	FB08/125/016

Axle Beam Spares (Table 1A) - Rev.B(04.05.06)

Table 1B : Axle Beam Spares (All Axles with TN & TP Bearing, with Standard Enclosed Camshaft)

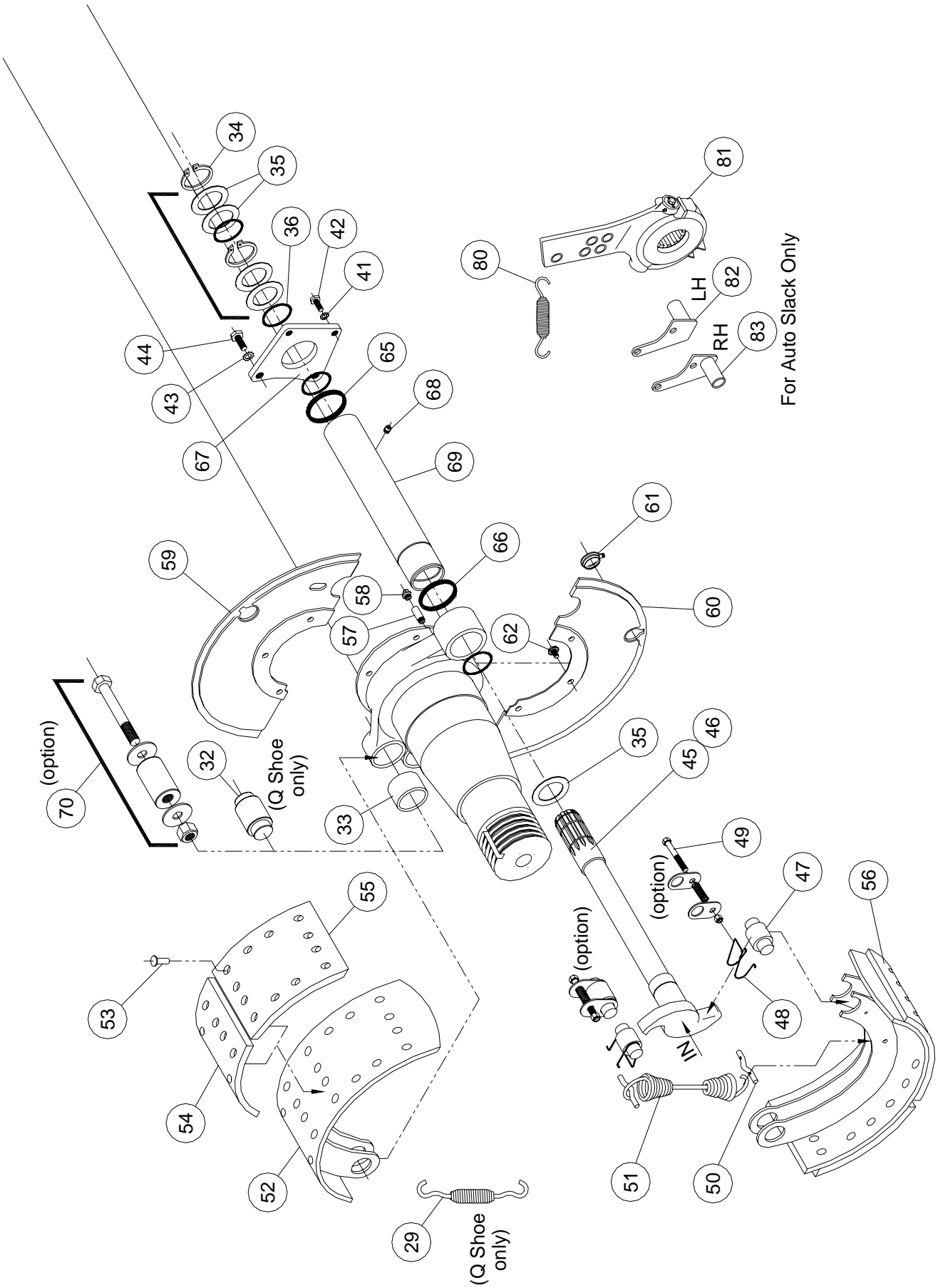


Table 1B : Axle Beam Spares (All Axles with TN & TP Bearing, with Standard Enclosed Camshaft)

Item	Description	Model No.	Model No.	Model No.	Model No.	Model No.	Model No.
29	Anchor Spring	2953/10	2950/1	2782/1, 2784/1	2682/1	2682/3A	
30	Anchor Pin	2954/11	2950/7	2782/2, 2784/2	2682/3		
31	Bush, Anchor Pin	501787	501787	500374	500374	501787	
32	Circlip, Camshaft	500374	500374	500358	500358	500374	
33	Spacer Washer, Camshaft	500358	500375	500375	500375	500358	
34	O Ring, Camshaft	500375	EW10	EW10	EW10	500375	
35	Star Washer, Spherical Bearing	EW10	EW10	EW10	EW10	EW10	
36	Bolt, Spherical Bearing	HB10/150/020	HB10/150/020	HB10/150/020	HB10/150/020	HB10/150/020	
37	Star Washer, Spherical Bearing	EW12	EW12	EW12	EW12	EW12	
38	Bolt, Spherical Bearing	HB12/175/020	HB12/175/020	HB12/175/020	HB12/175/020	HB12/175/020	
39	Camshaft LH	504742/01L/HT	504723/01L/HT	504723/01L/HT	504723/01L/HT	504723/01L/HT	
40	Camshaft LH (Optional)	504742/19L/HT	790238/19L/HT	504723/17L/HT	504723/17L/HT	504723/17L/HT	
41	Camshaft RH	504742/01R/HT	504723/01R/HT	504723/01R/HT	504723/01R/HT	504723/01R/HT	
42	Camshaft RH (Optional)	504742/19R/HT	790238/19R/HT	504723/17R/HT	504723/17R/HT	504723/17R/HT	
43	Cam Roller	500356	500356/02	500356/02	500356/01	500356/01	
44	Roller Retainer, Wire		500373	500373			
45	Roller Retainer, Bolted	787722/01	787722/01	787722/01	787722/01	787722/01	
46	Pin, Brake Return Spring	500372	500372	500372	500372	500372	
47	Brake Return Spring	501551	506498	786289	786289	786289	
48	Brake Shoe (Std)	502904/01 (P)	788845 (P)	787525 (Q)	502906/01 (P)	502906/01 (P)	
49	Brake Shoe (option)			502906/01 (P)			
50	Lining Rivet	502245	502245	502245	502245	502245	
51	Anchor Lining (ADR)	501571/02/P2008	506464/02/BP	786282/02/BP	786282/02/BP	786282/02/BP	
52	Anchor Lining (Option)	788857/02/AF237	788847/02/AF237	786282/02/TMD013	786282/02/TMD013	786282/02/TMD013	
53	Cam Lining (ADR)	501568/02/P2008	506464/02/BP	786281/02/BP	786281/02/BP	786281/02/BP	
54	Cam Lining (Option)	788856/02/AF237	788846/02/AF237	786281/02/TMD013	786281/02/TMD013	786281/02/TMD013	
55	Lined Shoe Assy (ADR)	SB502246/02/P2008	787650/04	SB502064/02/BP	SB502064/02/BP	SB502064/02/BP	
56	Lined Shoe Assy (Option)	SB788855/02/AF237	SB787650/02/AF237	SB502064/02/TMD013	SB502064/02/TMD013	SB502064/02/TMD013	
57	Dust Cover, Upper (L/R)	501577	506414/01	786335	786335	786335	
58	Dust Cover, Lower (L/R)	501576	506414/01	786336	786336	786336	
59	Dust Cover Plug	500848		500848	500848	500848	
60	Bolt, Dust Cover	FB08/125/016	FB08/125/016	FB08/125/016	FB08/125/016	FB08/125/016	
61	Seal Enclosed tube spline end	787720	787720	787720	787720	787720	
62	Seal Enclosed tube spider end	787721	787721	787721	787721	787721	
63	Enclosed tube support plate	787590	787590	787590	787590	787590	
64	Grease nipple Enclosed tube	738012/03	738012/03	738012/03	738012/03	738012/03	
65	Enclosed tube	788529/01	788529/01	788529/01	788529/01	788529/01	
66	Enclosed tube (Optional)	788529/19	788529/19	788529/19	788529/17	788529/17	
67	Anchor Pin Set, bolt-on	787997 (short)	787997 (short)	787997 (short)	787723 (long)	787997 (short)	
68	Anchor pin collar				787724		
69	Anchor pin retaining plate				792103		

Table 2A : Hub and Drum Spares (Disc Wheel Axles with TM & TQ Bearing)

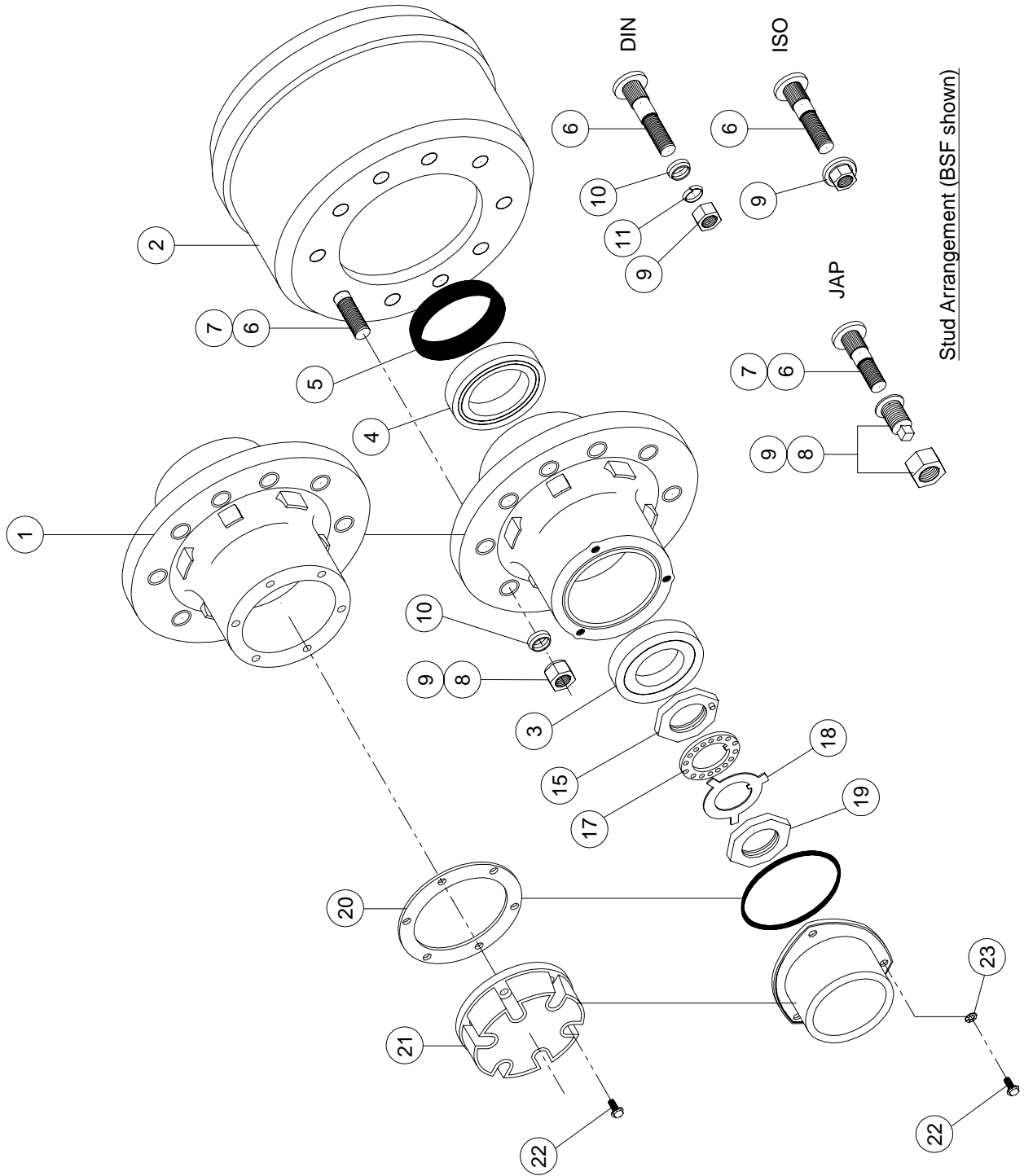


Table 2A : Hub and Drum Spares (Disc Wheel Axles with TM & TQ Bearing)

Item	Description	Model No.	Model No.	Model No.	Model No.	Model No.	Model No.	Model No.	Model No.	Model No.	Model No.	Model No.	Model No.	Model No.	Model No.	Model No.
1	Hub	790101/01	786223	786222	790101/01	786223	786222	786201	786201	786201	788905	507830	790352			
2	Drum	786115	786115	790204	788801	788801	790206	788848	788848	506412	788801	788801	790354			
3	Bearing (Outer)	786116	786116	786116	786116	786116	786116	786116	786116	786116	786117	786117	786117			
4	Bearing (Inner)	786117	786117	786117	786117	786117	786117	786117	786117	786117	502285	502285	502285			
5	Hub Seal	786114	786114	786114	786114	786114	786114	786114	786114	786114	502776	502776	502776			
6	Wheel Stud LH	-	786505	786507	-	786505	786507	-	-	-	-	786505	-			
7	Wheel Stud RH	786111	786504	786506	786111	786504	786506	786111	786111	786111	786111	786504	790307			
7(i)	Wheel Stud RH (Short Option)	786113	-	-	786113	-	-	-	-	-	-	-	-			
7(ii)	Wheel Stud RH (Long Option)	786511	-	-	786511	-	-	-	-	-	-	-	-			
8	Wheel Nut LH	-	500081/01	790002	-	500081/01	790002	-	-	-	-	500081/01	-			
9	Wheel Nut RH	502917	500081/02	790001	502917	500081/02	790001	502917	502917	502917	502917	500081/02	786112			
10	Wheel Stud /Bolt Collar	-	500080	-	-	500080	-	-	-	-	-	500080	-			
11	Wheel Nut Spring Washer	-	-	-	-	-	-	-	-	-	-	786331	-			
14	Spindle Thrust Washer	-	-	-	-	-	-	-	-	-	-	-	-			
15	Spindle Nut	502461	502461	502461	502461	502461	502461	502461	502461	502461	788889	788889	788889			
16	Spindle Nut Split Pin	-	-	-	-	-	-	-	-	-	-	-	-			
17	Spindle Lockwasher	501123	501123	501123	501123	501123	501123	501123	501123	501123	788891	788891	788891			
18	Tab Lockwasher	790044	790044	790044	790044	790044	790044	790044	790044	790044	-	-	-			
19	Spindle Outer Locknut	502462	502462	502462	502462	502462	502462	502462	502462	502462	502462	502462	502462			
20	Hub Cap Gasket / O ring	790224	790224	790224	790224	790224	790224	790224	790224	790224	502472	502472	502472			
21	Hub Cap (YORK/YTE)	786215	786215	786215	786215	786215	786215	786215	786215	501715	788901	788901	788901			
22	Bolt, Hub Cap	FB08/125/025	FB08/125/025	FB08/125/025	FB08/125/025	FB08/125/025	FB08/125/025	FB08/125/025	FB08/125/025	FB08/125/025	FB08/125/025	FB08/125/025	FB08/125/040			
23	Bolt Washer, Hub Cap	DLW08	DLW08	DLW08	DLW08	DLW08	DLW08	DLW08	DLW08	DLW08	DLW08	DLW08	DLW08			
24	Hub Cap Spacer	-	-	-	-	-	-	-	-	-	-	-	-			

Hub/Drum Spares Std.(Table2A)

Table 2B : Hub and Drum Spares (Disc Wheel Axles with TN & TP Bearing)

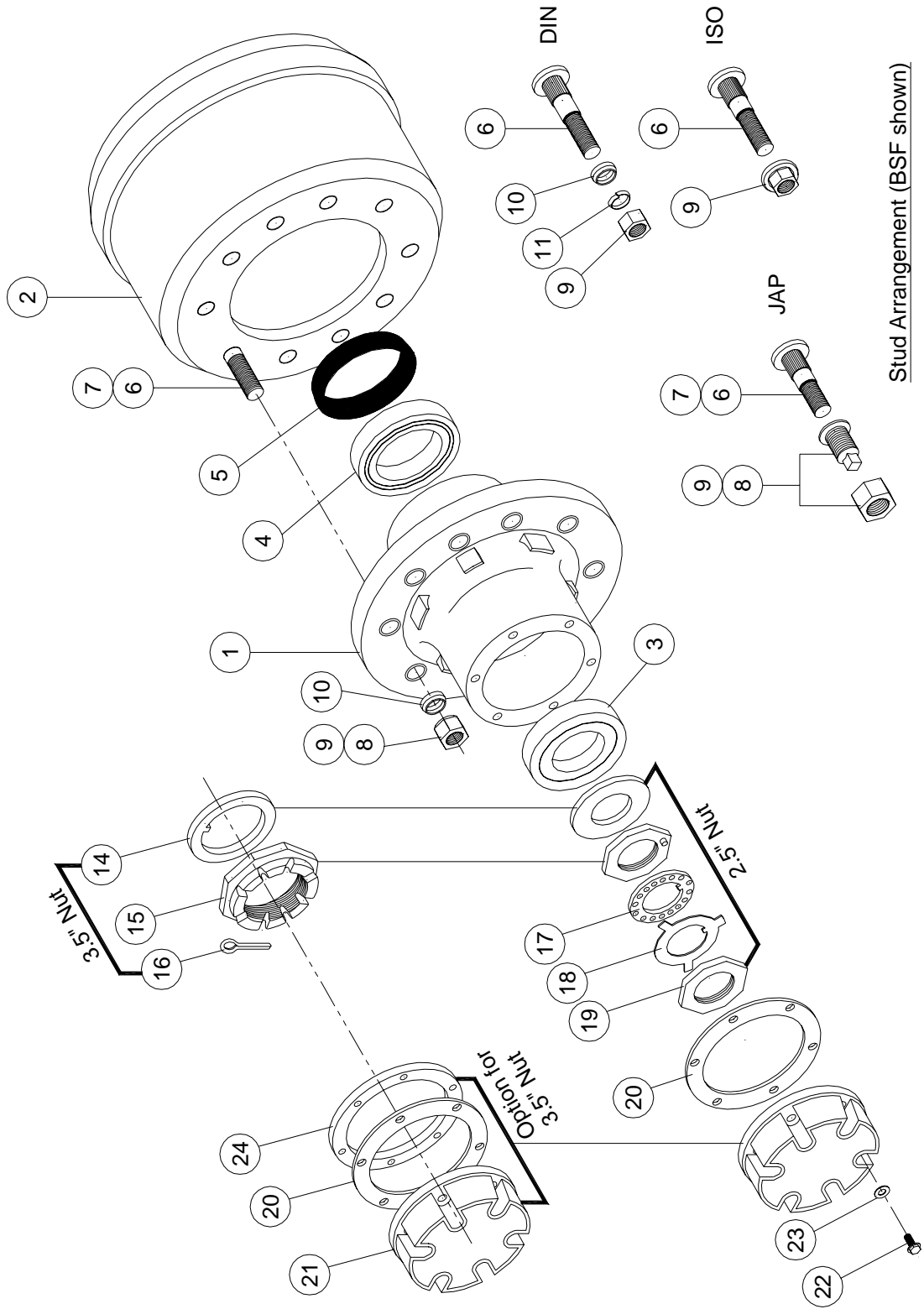


Table 2B : Hub and Drum Spares (Disc Wheel Axles with TN & TP Bearing)

Item	Description	Model No.	Model No.	Model No.	Model No.	Model No.	Model No.	Model No.	Model No.	Model No.	Model No.	Model No.	Model No.
1	Hub	787531	787712	10005477	792161	787595	787705	10008843	792161	787937-hub	789004		
2	Drum	786875	787571	786875	787973	787900	787704	787704	792163	787937-drum	789006		
3	Bearing (Outer)	786510	786510	786510	786510	786510	786510	786510	786510	787938	787938		
4	Bearing (Inner)	786117	786117	786117	786117	786117	786117	786117	786117	787938	787938		
5	Hub Seal	786114	786114	786114	786114	786114	786114	786114	786114	786918	789008		
6	Wheel Stud LH	-	-	-	-	786507	-	-	-	-	-		
7	Wheel Stud RH	792155	792155	-	792155	786506	792155	792155	792155	792155	789010		
7(i)	Wheel Stud RH (Short Option)	792154	792154	-	792154	-	792154	792154	792154	-	-		
7(ii)	Wheel Stud RH (Long Option)	792156	792156	792156	792156	-	792156	792156	792156	-	-		
8	Wheel Nut LH	-	-	-	-	790002	-	-	-	-	-		
9	Wheel Nut RH	502917/01	502917/01	502917/01	502917/01	790001	502917/01	502917/01	502917/01	502917/01	502917/01		
10	Wheel Stud/Bolt Collar	-	-	-	-	-	-	-	-	-	-		
11	Wheel Nut Spring Washer	-	-	-	-	-	-	-	-	-	-		
14	Spindle Thrust Washer	-	-	-	-	-	-	-	-	-	-		
15	Spindle Nut	502461	502461	502461	502461	502461	502461	502461	502461	787998/01	789016		
16	Spindle Nut Split Pin	-	-	-	-	-	-	-	-	-	788891		
17	Spindle Lockwasher	501123	501123	501123	501123	501123	501123	501123	501123	792024	-		
18	Tab Lockwasher	790044	790044	790044	790044	790044	790044	790044	790044	787999	-		
19	Spindle Outer Locknut	502462	502462	502462	502462	502462	502462	502462	502462	787998	-		
20	Hub Cap Gasket / O ring	787719	787719	787719	787719	787719	787719	787719	787719	-	789019		
21	Hub Cap (YORK/YTE)	501715	501715	501715	501715	501715	501715	501715	501715	787939	789020		
22	Bolt, Hub Cap	HB08/125/025	HB08/125/025	HB5/16JUNC1.00	HB08/125/025	HB08/125/025	HB08/125/025	HB5/16JUNC1.00	HB08/125/025	-	HB06/100/016		
23	Bolt Washer, Hub Cap	SW08	SW08	SW08	SW08	SW08	SW08	SW08	SW08	-	SW06		
24	Hub Cap Spacer	-	-	-	-	-	-	-	-	-	-		

Hub/Drum Spares HD&LB (Table 2B)

Table 3 : Hub and Drum Spares (All Spoke Wheel Hub Axles)

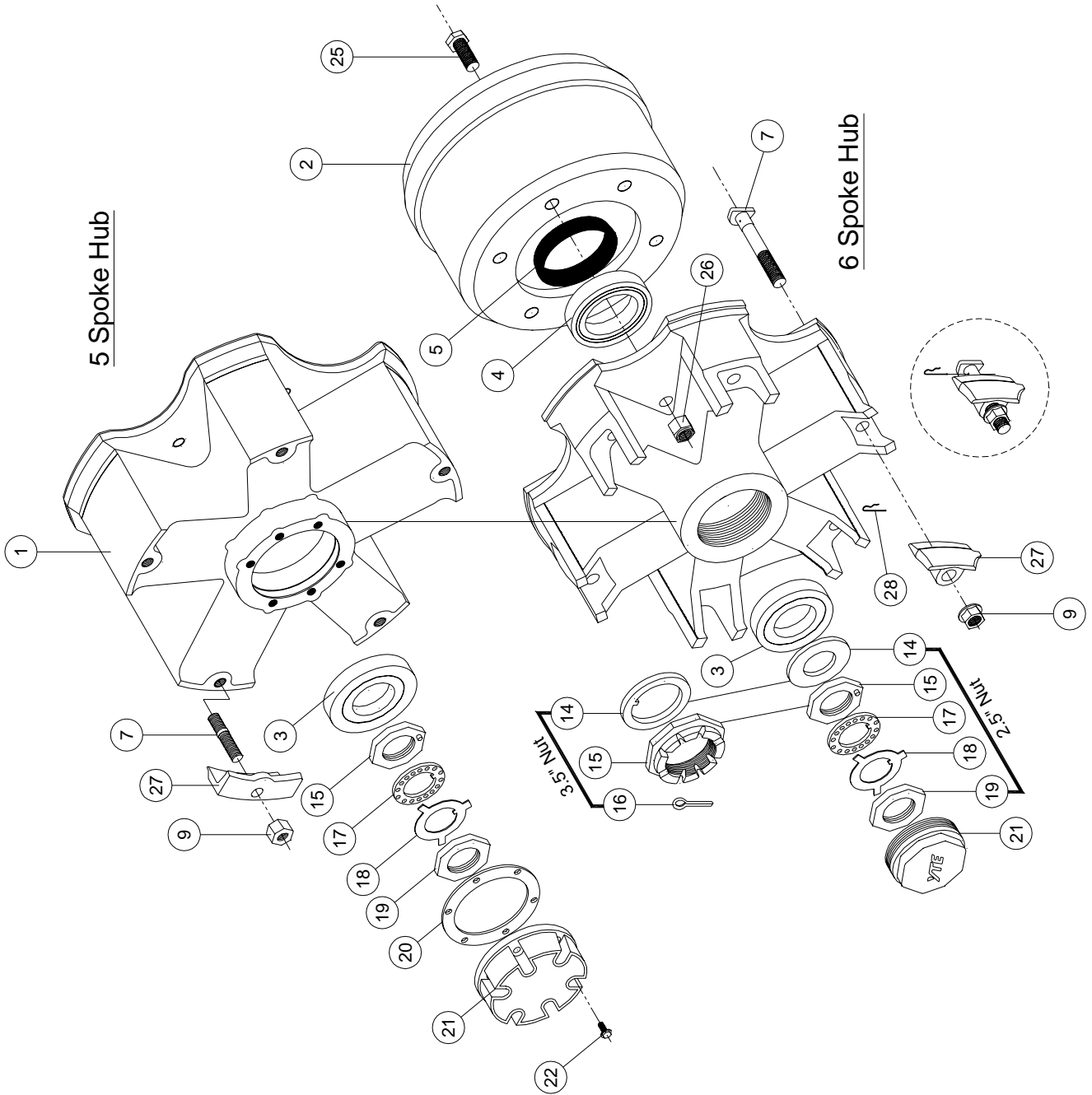


Table 3 : Hub and Drum Spares (All Spoke Wheel Hub Axles)

Item	Description	Model No.	Model No.	Model No.	Model No.	Model No.	Model No.	Model No.	Model No.	Model No.	Model No.
1	Spoke Hub	790282	790280	790283	271405-hub	271405-hub	271405-hub	2783/1	2950/1	2782/1	2682/1
2	Drum	787684	787684	787684	786984/01	786856	786856	787945/01-drum	787945/01-drum	787945/01-drum	787928-hub
3	Bearing (Outer)	786116	786117	786117	786510	786510	786510	786510	786510	786510	787938
4	Bearing (Inner)	786117	502285	502285	786117	786117	786117	786117	786117	786117	787938
5	Hub Seal	786114	502776	502776	786114	786114	786114	786114	786114	786114	786918
7	Wheel Stud	790295/145	790295/130	790295/145	271405-clamp stud	271405-clamp stud	271405-clamp stud	271405-clamp stud	271405-clamp stud	271405-clamp stud	787928-clamp stud
9	Wheel Nut	790294	790294	790294	271405-clamp nut	271405-clamp nut	271405-clamp nut	271405-clamp nut	271405-clamp nut	271405-clamp nut	787928-clamp nut
15	Spindle Nut	502461	788890/YTE	788890/YTE	502461	502461	502461	502461	502461	502461	787998/01
16	Spindle Nut Split Pin	-	788891	788891	-	-	-	-	-	-	-
17	Spindle lock washer	501123	-	-	501123	501123	501123	501123	501123	501123	792024
18	Tab Lockwasher	790044	-	-	790044	790044	790044	790044	790044	790044	787999
19	Spindle lock nut	502462	-	-	502462	502462	502462	502462	502462	502462	787998
20	Hub Cap Gasket	-	-	-	787719	787719	787719	787719	787719	787719	-
21	Hub Cap (YORK/YTE)	790213	790214	790214	501715	501715	501715	501715	501715	501715	787939
22	Bolt, Hub Cap	-	-	-	HB5/16UNC1.00	HB5/16UNC1.00	HB5/16UNC1.00	HB5/16UNC1.00	HB5/16UNC1.00	HB5/16UNC1.00	-
23	Bolt Washer, Hub Cap	-	-	-	SW08	SW08	SW08	SW08	SW08	SW08	-
25	Bolt (Hub/Drum)	HB20/250/050	HB20/250/055	HB20/250/050	HB5/8UNF2.00-G5	HB5/8UNF2.00-G5	HB5/8UNF2.00-G5	HB5/8UNF2.00-G5	HB5/8UNF2.00-G5	HB5/8UNF2.00-G5	HB3/4UNF2.25-G5
26	Nut (Hub/Drum)	CLN20/250	CLN20/250	CLN20/250	CLN5/8UNF-G5	CLN5/8UNF-G5	CLN5/8UNF-G5	CLN5/8UNF-G5	CLN5/8UNF-G5	CLN3/4UNF-G5	CLN3/4UNF-G5
27	Wheel Clamp	790296	790296	790296	271405-clamp	271405-clamp	271405-clamp	271405-clamp	271405-clamp	271405-clamp	787928-clamp
28	Wheel Bolt Splint	790274	790274	790274	-	-	-	-	-	-	-

Hub/Drum Spares Spoke (Table3)